

Leave
blank

Question 1 continued

Ruled area with 30 horizontal lines for writing.

Q1

(Total 4 marks)



Question 3 continued

Lined writing area for the answer to Question 3.



Question 3 continued

Lined writing area for the response.

(Total 8 marks)

Q3



5.

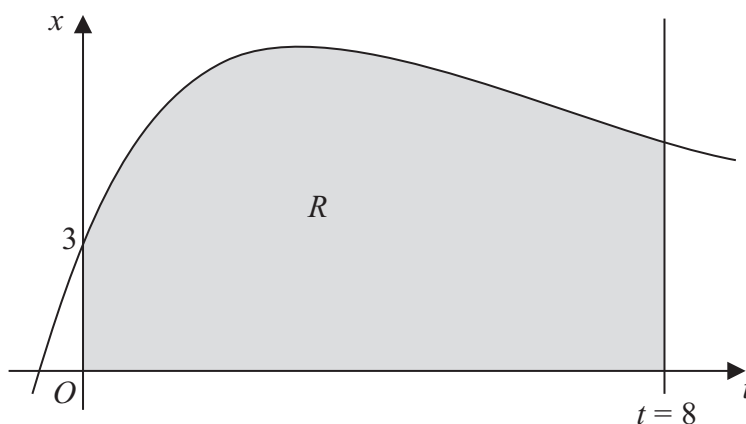


Figure 1

Figure 1 shows part of the curve with equation $x = 4te^{-\frac{1}{3}t} + 3$. The finite region R shown shaded in Figure 1 is bounded by the curve, the x -axis, the t -axis and the line $t = 8$.

- (a) Complete the table with the value of x corresponding to $t = 6$, giving your answer to 3 decimal places.

t	0	2	4	6	8
x	3	7.107	7.218		5.223

(1)

- (b) Use the trapezium rule with all the values of x in the completed table to obtain an estimate for the area of the region R , giving your answer to 2 decimal places.

(3)

- (c) Use calculus to find the exact value for the area of R .

(6)

- (d) Find the difference between the values obtained in part (b) and part (c), giving your answer to 2 decimal places.

(1)



6. Relative to a fixed origin O , the point A has position vector $21\mathbf{i} - 17\mathbf{j} + 6\mathbf{k}$ and the point B has position vector $25\mathbf{i} - 14\mathbf{j} + 18\mathbf{k}$.

The line l has vector equation

$$\mathbf{r} = \begin{pmatrix} a \\ b \\ 10 \end{pmatrix} + \lambda \begin{pmatrix} 6 \\ c \\ -1 \end{pmatrix}$$

where a , b and c are constants and λ is a parameter.

Given that the point A lies on the line l ,

- (a) find the value of a . **(3)**

Given also that the vector \overrightarrow{AB} is perpendicular to l ,

- (b) find the values of b and c , **(5)**

- (c) find the distance AB . **(2)**

The image of the point B after reflection in the line l is the point B' .

- (d) Find the position vector of the point B' . **(2)**



Question 6 continued

Handwriting practice area consisting of 35 horizontal lines.

(Total 12 marks)

Q6

Two empty boxes for marking.



7.

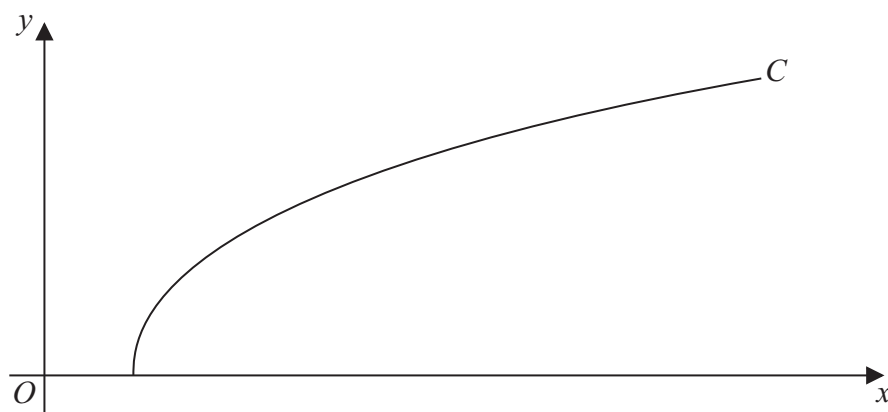


Figure 2

Figure 2 shows a sketch of the curve C with parametric equations

$$x = 27 \sec^3 t, \quad y = 3 \tan t, \quad 0 \leq t \leq \frac{\pi}{3}$$

(a) Find the gradient of the curve C at the point where $t = \frac{\pi}{6}$ (4)

(b) Show that the cartesian equation of C may be written in the form

$$y = (x^{\frac{2}{3}} - 9)^{\frac{1}{2}}, \quad a \leq x \leq b$$

stating the values of a and b . (3)

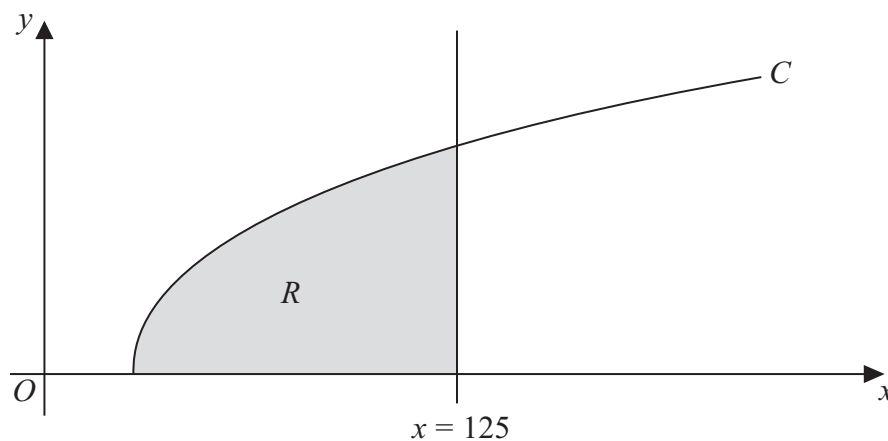


Figure 3

The finite region R which is bounded by the curve C , the x -axis and the line $x = 125$ is shown shaded in Figure 3. This region is rotated through 2π radians about the x -axis to form a solid of revolution.

(c) Use calculus to find the exact value of the volume of the solid of revolution. (5)



8. In an experiment testing solid rocket fuel, some fuel is burned and the waste products are collected. Throughout the experiment the sum of the masses of the unburned fuel and waste products remains constant.

Let x be the mass of waste products, in kg, at time t minutes after the start of the experiment. It is known that at time t minutes, the rate of increase of the mass of waste products, in kg per minute, is k times the mass of unburned fuel remaining, where k is a positive constant.

The differential equation connecting x and t may be written in the form

$$\frac{dx}{dt} = k(M - x), \text{ where } M \text{ is a constant.}$$

- (a) Explain, in the context of the problem, what $\frac{dx}{dt}$ and M represent. (2)

Given that initially the mass of waste products is zero,

- (b) solve the differential equation, expressing x in terms of k , M and t . (6)

Given also that $x = \frac{1}{2}M$ when $t = \ln 4$,

- (c) find the value of x when $t = \ln 9$, expressing x in terms of M , in its simplest form. (4)



Question 8 continued

A series of horizontal lines for writing an answer.



Question 8 continued

Lined area for writing the answer to Question 8.

Q8

(Total 12 marks)

TOTAL FOR PAPER: 75 MARKS

END

